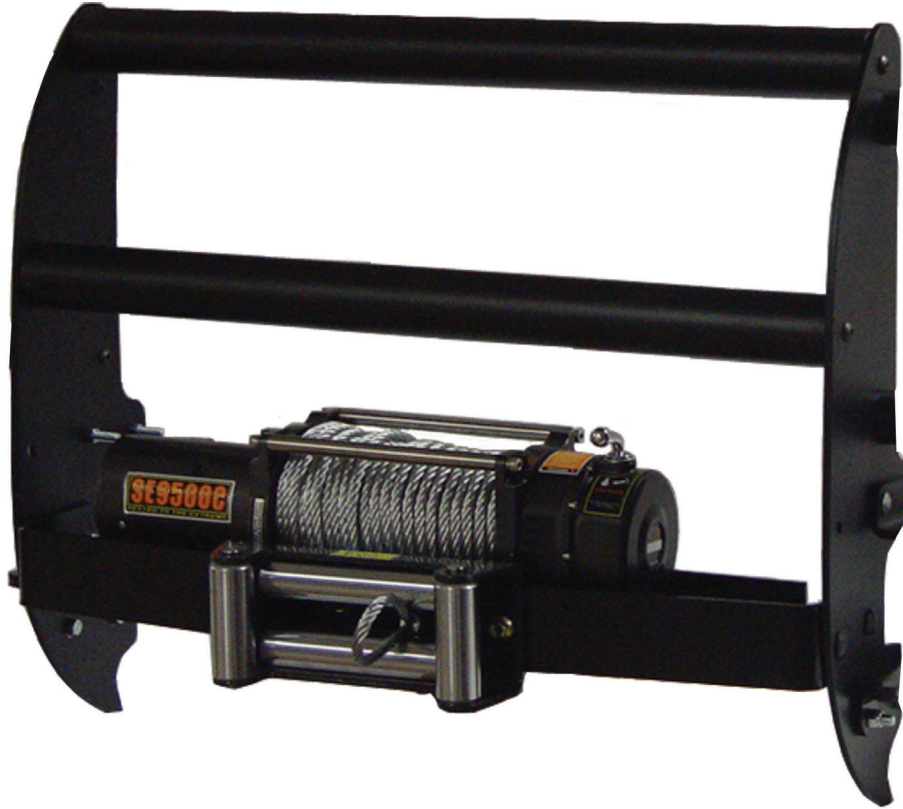


Winch System Grille Guard

Installation Instructions

33647 / 33647B

Ford Super Duty 2017



Shown with optional winch carrier #33600
**** Winch and Fairlead NOT included****

Note: Completely read instructions before beginning installation!



Parts List:

- 2) Upright #33647-1
- 1) Upper Bracket (Driver) #33647-5
- 1) Upper Bracket (Passenger) #33647-6
- 1) Lower Bracket (Driver) #33647-7
- 1) Lower Bracket (Passenger) #33647-8
- 2) Bumper Support Bracket #33647-9
- 2) 2 1/2" x 32" Cross Tube
- 1) Hardware Kit #33647KIT
- 1) Tube Hardware Kit #33641TUBEKIT
- 4) Neoprene Gaskets #33641GASKET

33647 Hardware Kit Contents:

- 2) 5/8" x 1 3/4" Bolts
- 2) 5/8" Flat Washers
- 2) 5/8" Lock Washers
- 2) 5/8" Nuts
- 10) 1/2" x 1 1/2" Bolts
- 10) 1/2" x 2" Bolts
- 20) 1/2" Nuts
- 20) 1/2" Lock Washers
- 40) 1/2" Flat Washers

Tube Hardware Kit Contents:

- 4) 3/8" x 1 1/2" Buttonhead Bolts



420 N. Grove, Richardson, TX 75081
Tele: (800) 527 - 4345 Fax: (800) 442 - 5263
Web site: www.goindustries.com
E-mail: gosupport@goindustries.com

Winch System Grille Guard

Installation Instructions

33647 / 33647B

Ford Super Duty 2017

Note: Completely read instructions before beginning installation!

1. Remove the contents from the box and check for missing or damaged parts. If parts are missing or damaged, contact the original place of purchase.
2. Unplug any electrical connectors between the bumper and the vehicle. Then begin the bumper disassembly by removing the 4 bumper support bracket bolts which are behind the bumper and near the outside corners. Next, remove the 8 bumper bolts shown in Diagram 1, and carefully remove the bumper. All of these bolts and nutplates will be re-used.
3. Remove the lower air dam from the bumper as it will need to be trimmed prior to re-installation along with the tow hook panels.
4. Now you may remove the tow hooks and anti-dive brackets if equipped, and set them aside as they will not be re-used.
5. Replace factory tow hook assembly with the upper brackets #33647-5 and #33647-6 directly on top of the frame rails and the #33647-9 brackets on top of those. They will be secured using (8) 1/2" x 2" bolts, (16) 1/2" flat washers, (8) 1/2" lock washers, and (8) 1/2" hex nuts.
6. Place the bottom brackets #33647-7 and #33647-8 up to frame. Place (2) 1/2" x 1 1/2" bolts in the front and rear holes through the frame, put on (2) 1/2" flat washer, 1/2" lock washer, and a 1/2" hex nut for each bolt used. Hand tighten at this time.
7. You will need to trim the plastic around the factory tow hook location using Diagram 2 as a guide. After this is completed you may re-install the bumper. Guide the upper brackets through the tow hook openings and use the factory bolts and nut plates to attach the bumper to the bumper brackets (Diagram 3). Push the bumper up when tightening all 8 factory bumper bolts. Re-install the 4 factory bumper support bracket bolts as well and tighten. Place uprights up to the upper brackets and secure using (2) 1/2" x 2" bolts, (4) 1/2" flat washers, (2) 1/2" lock nuts, and (2) 1/2" hex nuts in the upper bracket holes away from the truck and (2) 1/2" x 1 1/2" bolts, (4) 1/2" flat washers, (2) 1/2" lock nuts, and (2) 1/2" hex nuts in the upper bracket holes closer to the grille. Hand tighten bolts. If a winch carrier is going to be installed, install at this time. Utilize the remaining (4) 1/2" x 1 1/2" bolts, (8) 1/2" flat washers, (4) 1/2" lock washers, and (4) 1/2" hex nuts to secure the uprights to the lower brackets (Diagram 4).
8. Install the 2 cross tubes with a rubber gasket placed between the tube and the inside of the upright on all 4 positions and secure with the 3/8" x 1 1/2" buttonhead bolts. Tighten all bolts on the main and bottom brackets.
9. If installing headlight guards, place them to the outside of the uprights and secure them using the provided hardware.
10. Gradually tighten all frame and grille guard hardware maintaining a straight and level alignment until tight.
11. Place the air dam back up to the bumper as shown in Diagram 5 and mark around the area needed to be trimmed for your installation. Trim the air dam and replace using factory hardware.

Note: Re-check all hardware for proper tightness upon completion and periodically inspect hardware and parts for signs of wear throughout the life of the product.

Winch System Grille Guard
 Installation Instructions
33647 / 33647B
 Ford Super Duty 2017



Front Bumper Mounting Bolts

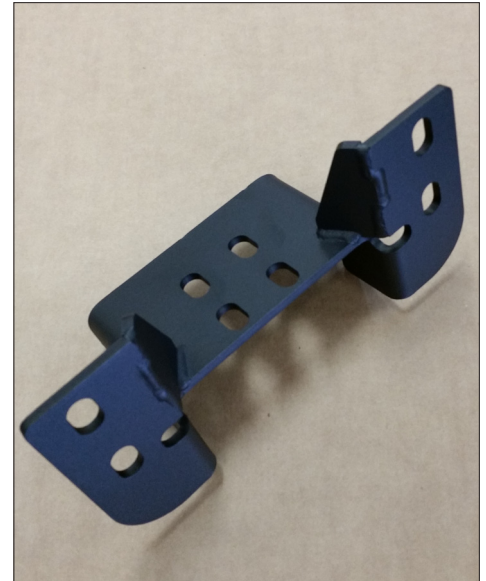
Diagram 1



33647-5 & 33647-6



33647-7 & 33647-8



33647-9

Winch System Grille Guard

Installation Instructions

33647 / 33647B

Ford Super Duty 2017

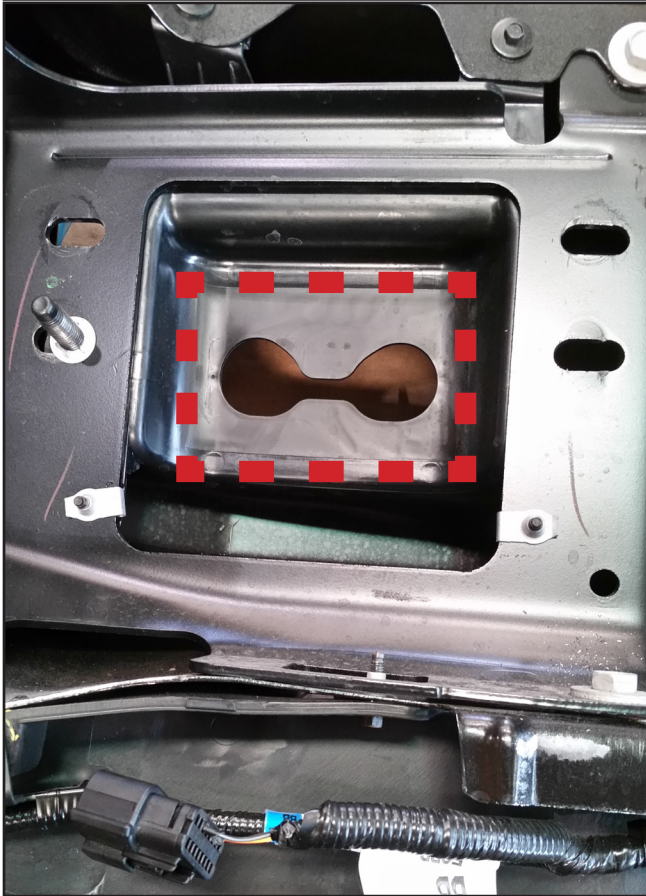


Diagram 2



Diagram 3

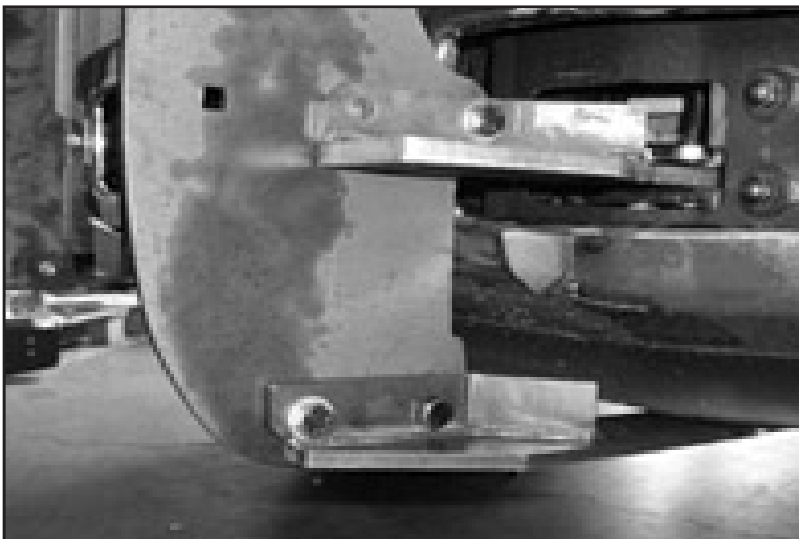


Diagram 4



Diagram 5