

Pro-Series
Bumper Replacement
 Installation Instructions
58647W
 Ford Super Duty 2017 - 2018



58647W Components

- 1) 58647W Pro-Series Bumper Replacement
- 1) Driver side mounting bracket #59647-5
- 1) Passenger side mounting bracket #59647-6
- 2) Bracket for 6" light #59645-11
- 1) Hardware Kit #59647KIT

59647KIT Hardware Kit Contents

- 20) 1/2" - 13 x 1 1/2" Hex Bolts (silver zinc)
- 40) 1/2" Flat Washers (silver zinc)
- 20) 1/2" Nylon Locking Nuts (silver zinc)
- 2) 1/2" - 13 x 1 1/2" Hex Bolts (black zinc)
- 4) 1/2" Flat Washers (black zinc)
- 2) 1/2" Nylon Locking Nuts (black zinc)

May include extra hardware

Note: Completely read instructions before beginning installation!

1. Remove the contents from the box and check for missing or damaged parts. If parts are missing or damaged, contact the original place of purchase.
2. Unplug any electrical connectors between the bumper and the vehicle. Then begin the bumper disassembly by removing the 4 bumper support bracket bolts which are behind the bumper and near the outside corners. Next, remove the 8 bumper bolts shown in Diagram 1, and carefully remove the bumper.
3. Remove the tow hooks, factory bolts, and anti-dive brackets if equipped, and set them aside as they will not be reused. Using **Diagram 4**, place driver main bracket #59647-5 onto the top of the frame using (8) 1/2" x 1 1/2" bolts, (16) 1/2" flat washers and (8) 1/2" nylon lock nuts to attach the driver main bracket #59647-5 to the frame. Repeat the preceding procedure to install the passenger main bracket #59647-6.
4. If a winch and fairlead is to be used, install it at this time as per the manufactures installation instructions.
5. Place the bumper replacement on the brackets installed in step #3. Place (1) 1/2" flat washer onto the remaining 1/2" x 1 1/2" bolts. Insert the (8) bolts with washers through the bumper replacement and brackets. Place (1) 1/2" flat washer and (1) 1/2" nylon lock nut onto each of the 1 1/2" bolts.
6. The bumper and brackets are slotted for side to side as well as up and down adjustment of the bumper. Center the bumper onto vehicle and tighten all bolts and nuts. With all the adjustment the bumper has in it, it can sometimes make it tricky to get the bumper aligned and centered. It may require bolts to be loosened and tightened to get it aligned.

Pro-Series
Bumper Replacement
 Installation Instructions
58647W
 Ford Super Duty 2017 - 2018



Front Bumper Mounting Bolts

Diagram 1



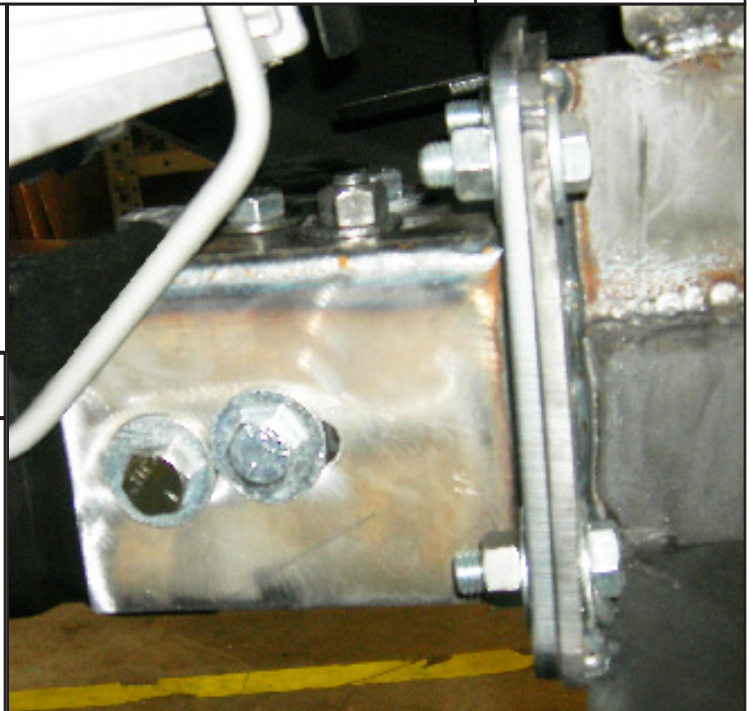
Brackets #59647-6 & #59647-5

Diagram 2



6" Light Brackets #59645-11

Diagram 3



Bracket #59647-5 Installed

Diagram 4

Note: Re-check all hardware for proper tightness upon completion and periodically inspect hardware and parts for signs of wear throughout the life of the product.